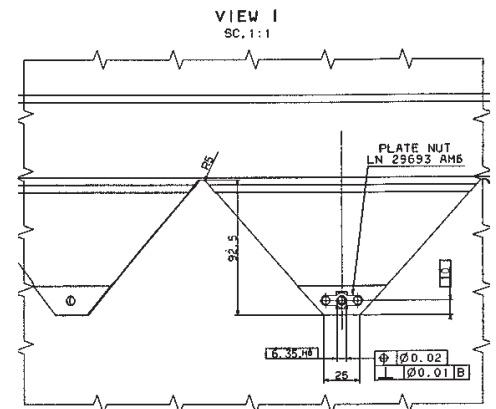
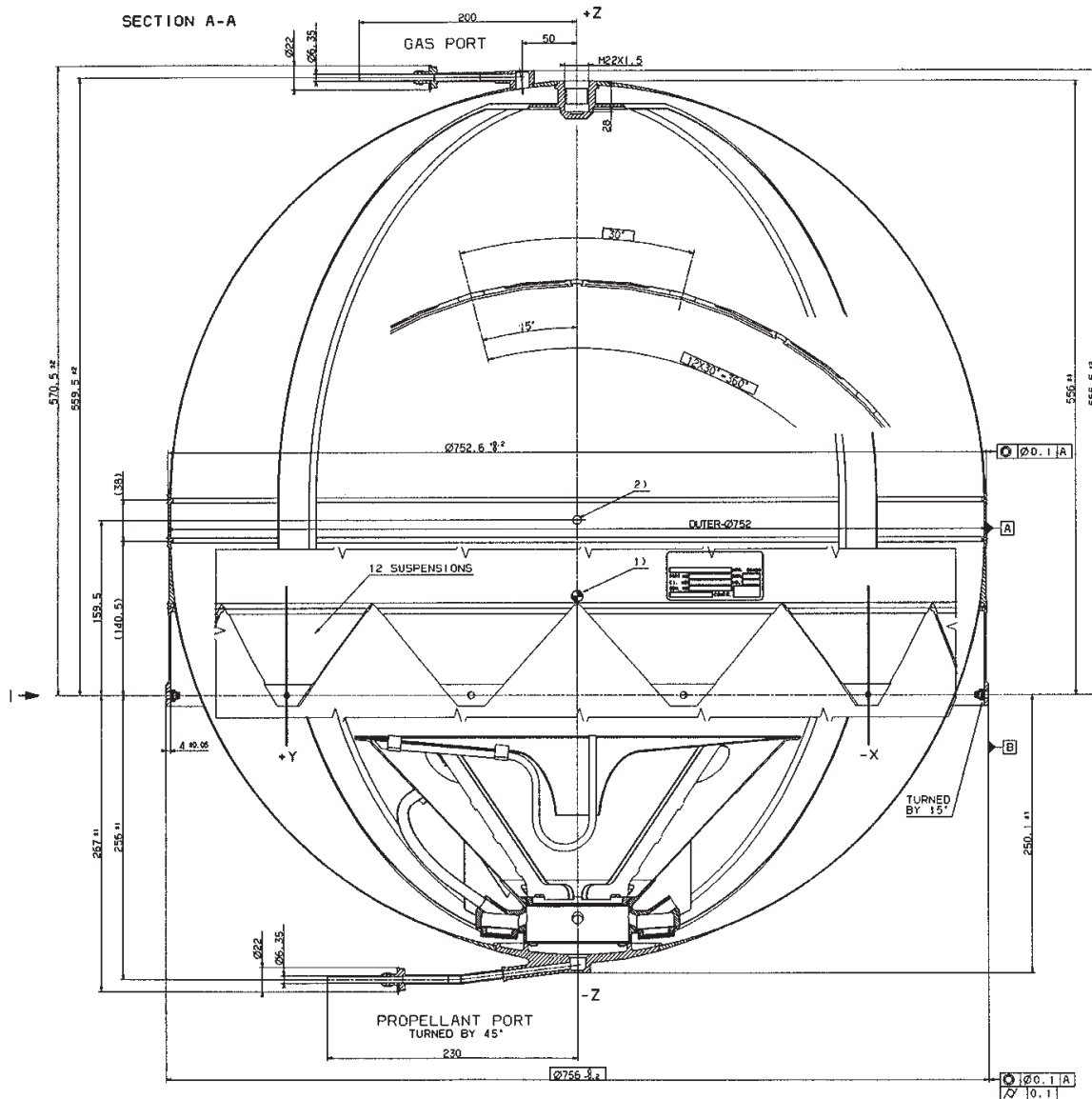


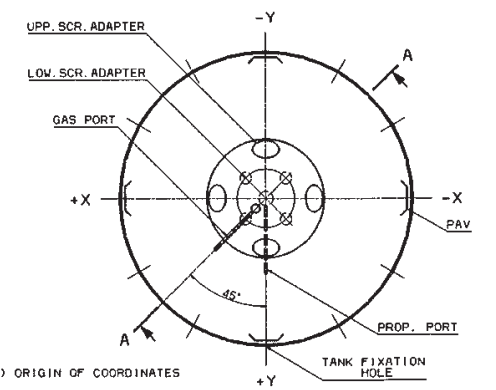
Surface Tension Propellant Tank OST 21/0

Tank Net Volume:	235 Litres
Propellants:	MON respectively MMH
Geometrical Shape:	Spherical with a cylindrical intersection
Interface Fixation:	12 Suspension Tabs with floating nuts M6 x 1 (e.g.)
Materials	
- Pressure Vessel:	Ti6Al4V STA (3.7164.7)
- Suspension/Ports:	Ti6Al4V (3.7164.1)
- PMD:	Ti99.4 (3.7034.1) and Ti6Al4V (3.7164.1)
- Screens:	304L (1.4306); qualified also for Ti99.4 (3.7025.1)
Tank Mass:	16 kg
Project Involvement:	Amos





SYSTEM SKETCH



- 2) ORIGIN OF COORDINATES
- 1) CENTER OF GRAVITY (REF.: AMOS/01/TN/005/ERN)

Pressurant Gas: Helium (He) or Nitrogen (N₂)
 Maximum Expected
 Operating Pressure (MEOP): 22.0 bar
 Proof Pressure (1.5 x MEOP): 33.0 bar
 Burst Pressure (2.0 x MEOP): 44.0 bar